

## Adapter DIP-40\_C1

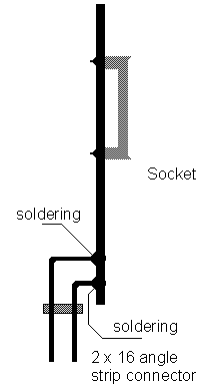
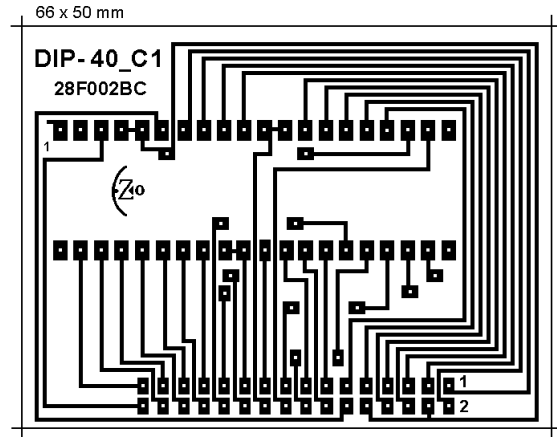
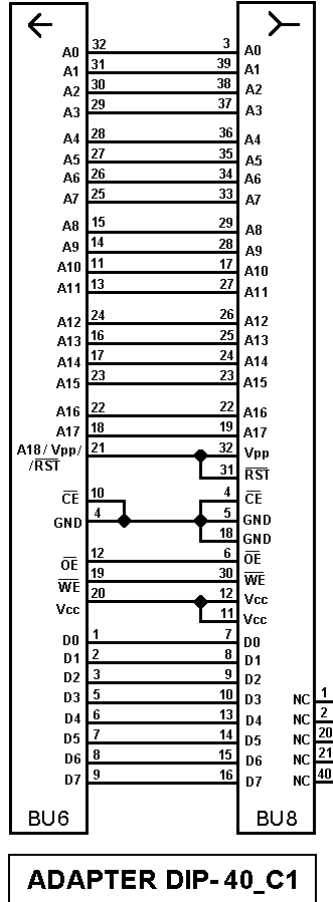
EzoFlash+ adapter for flash memory 28F002BC in DIP-40 package.

### 1. Part list.

BU6 – Angle dual pin-header 2 x16, division 2.54

BU8 – DIL-40 socket

### 2. Schematic, PCB and pictures



### 3. Settings, supported chip list

Willem programmer software version 0.97g or latest.

Selected device *Flash28Fxxx > 28F00x 8bit > 28F002BC (DIP-40)*

Jumpers Jp1, Jp3 (+5V), Jp4 (Vpp)

Adapter is not verified. Report results in Willem/EZoFlash forums.